



LEGACY  
PLACE

11290 Legacy Ave, Palm Beach Gardens, Florida 33410

**John Ellis**

john.ellis@nmrk.com  
t 305-372-6204

**Warren Dauber**

warren.dauber@nmrk.com  
t 248-345-0484

**NEWMARK**

RETAIL SPACE **FOR LEASE**  
**LIFESTYLE/POWER CENTER**



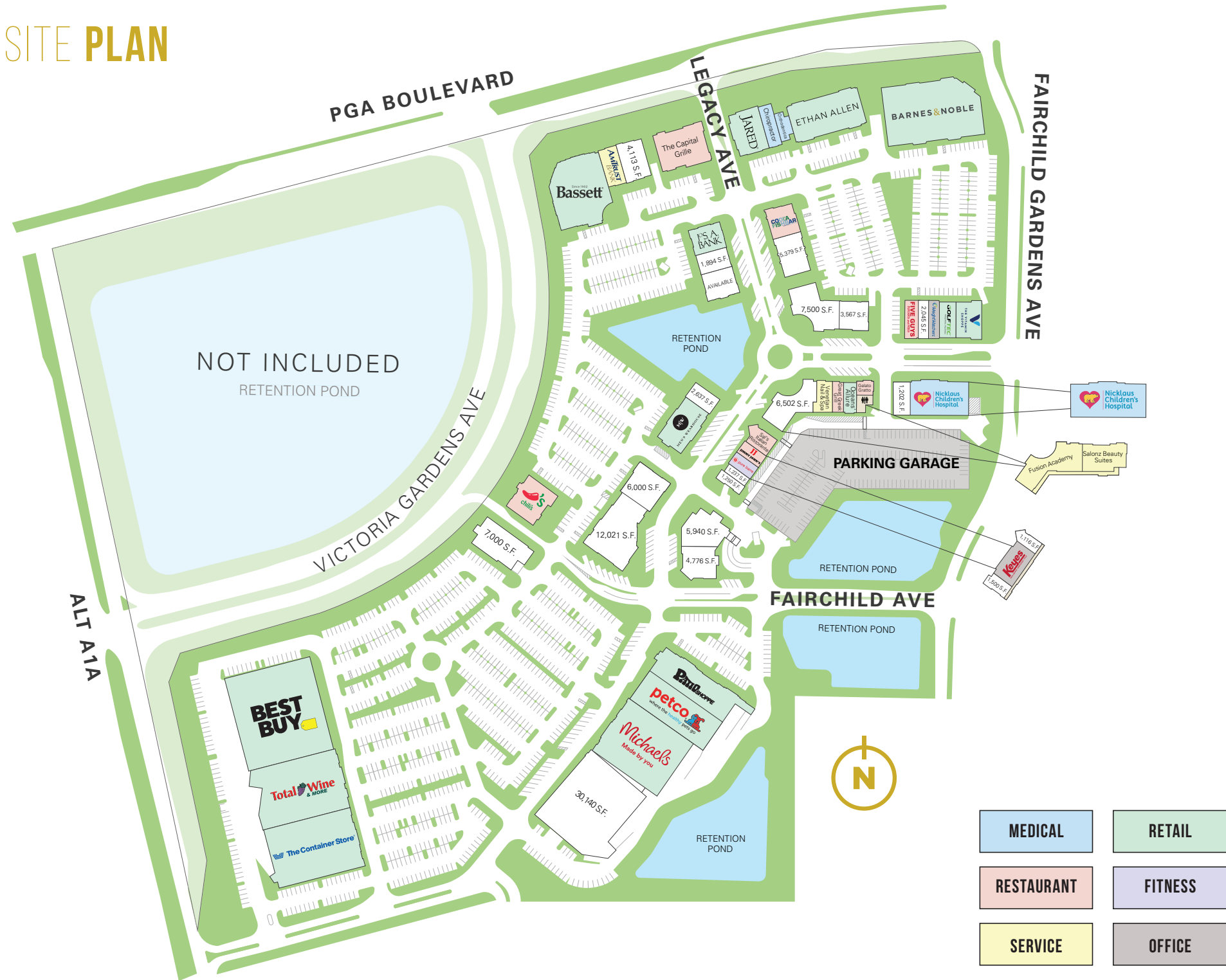
## LEGACY PLACE

**is located on PGA Boulevard, just east of I-95 in Palm Beach Gardens, Florida**

The center is centrally located across from Downtown at the Gardens and Gardens Mall. Legacy Place is surrounded by dense residential and in direct proximity to the area's multi-property revitalization.



# SITE PLAN



WHERE PBG COMES TO **LIVE, WORK, & PLAY**

- 3RD** Largest County in Florida
- 700K** Median Home Sale Price
- 96K** Employees in Palm Beach Gardens
- 46** Median Age in Palm Beach Gardens
- \$4.6B** In consumer spending from 7.3M annual visitors
- 82** Golf Courses within 20 miles





**DOWNTOWN PALM BEACH GARDENS**

**THE GARDENS MALL**

Apple  
 bloomingdales  
*Saks Fifth Avenue*  
 NORDSTROM

OFFICE BUILDING COMING SOON

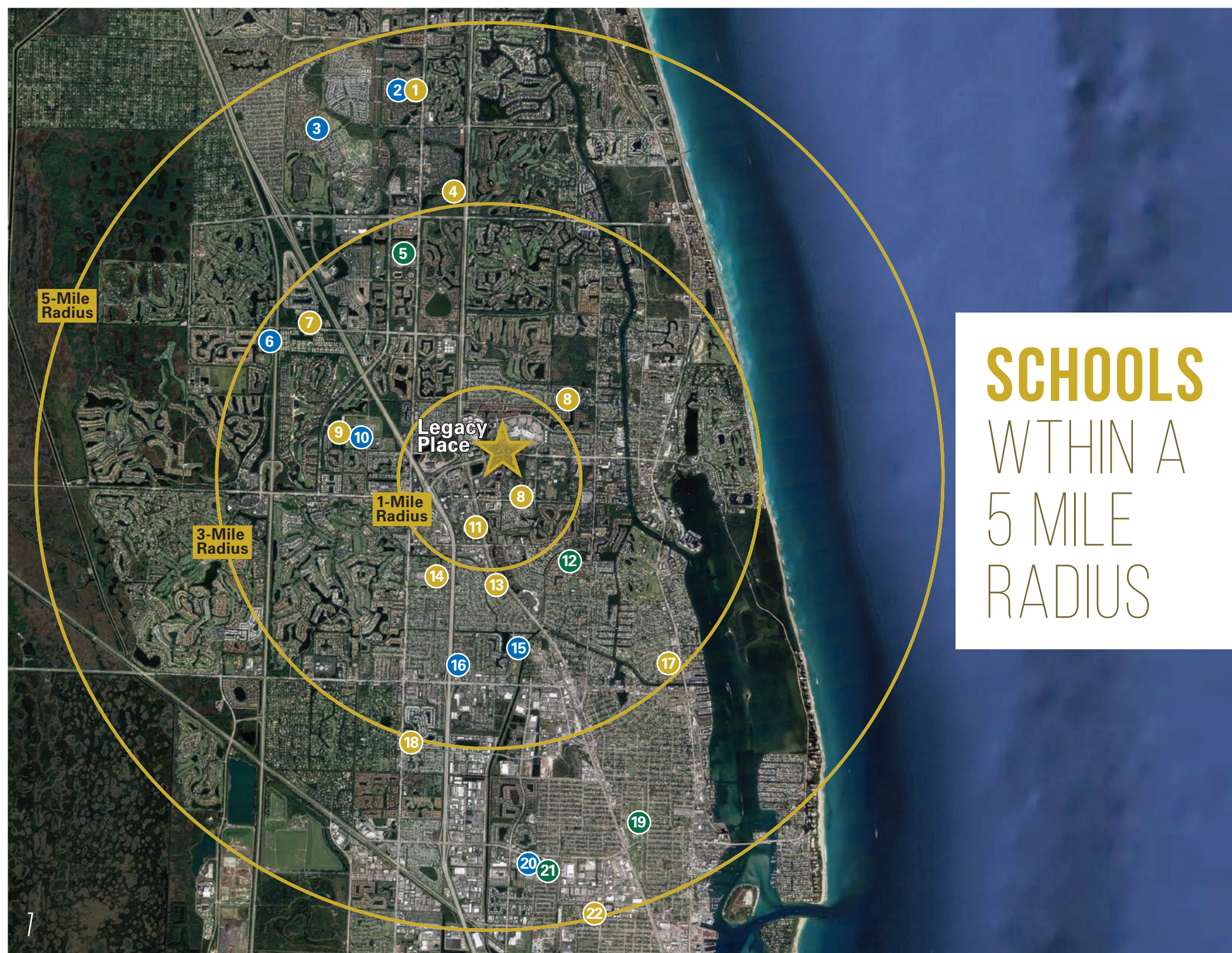
**TRADER JOE'S**

**LEGACY PLACE**

ETHAN ALLEN

# PALM BEACH GARDENS FACTOIDS

- Consumer Spending Breakdown:
  - » Retail: **\$1B**
  - » Food & Bev: **\$1.4B**
  - » Recreation: **\$600M**
- The Gardens Mall: 1.4M SF Shopping center, **160 shops, luxury stores**
- PGA National Resort: just implemented a **\$100M transformation**
- Single-family home sales **spiked 62%** in Feb 2021
- Multiple **colleges & universities** in the area
- PGA National Members Club nearby, **30 Pros are members**, most of which live or have houses in PBG
- Parks and Rec operates **110 parks & recreation facilities**, including two water parks.



# SCHOOLS WITHIN A 5 MILE RADIUS

## Elementary Schools No. of Students

1	Lighthouse Elementary	709
4	Beacon Cove Intermediate School	719
7	Marsh Pointe Elementary	887
8	Dwight D Eisenhower Elementary & Middle School 519	519
9	Timber Trace Elementary School	1,007
11	Bright Futures Academy	211
13	Palm Beach Gardens Elementary School	723
14	Allamanda Elementary School	719
17	The Conservatory School at North Palm Beach	948
18	Grove Park Elementary School	548
22	Lincoln Elementary	439

## Middle Schools No. of Students

2	Jupiter Middle School of Technology	1,435
3	Independence Middle School	1,378
6	Franklin Academy Charter School	670
10	Watson B. Duncan Middle School 519	1,317
15	Howell L. Watkins Middle School	912
16	Gardens School of Technology Arts	360
20	John F. Kennedy Middle School	787

## High Schools No. of Students

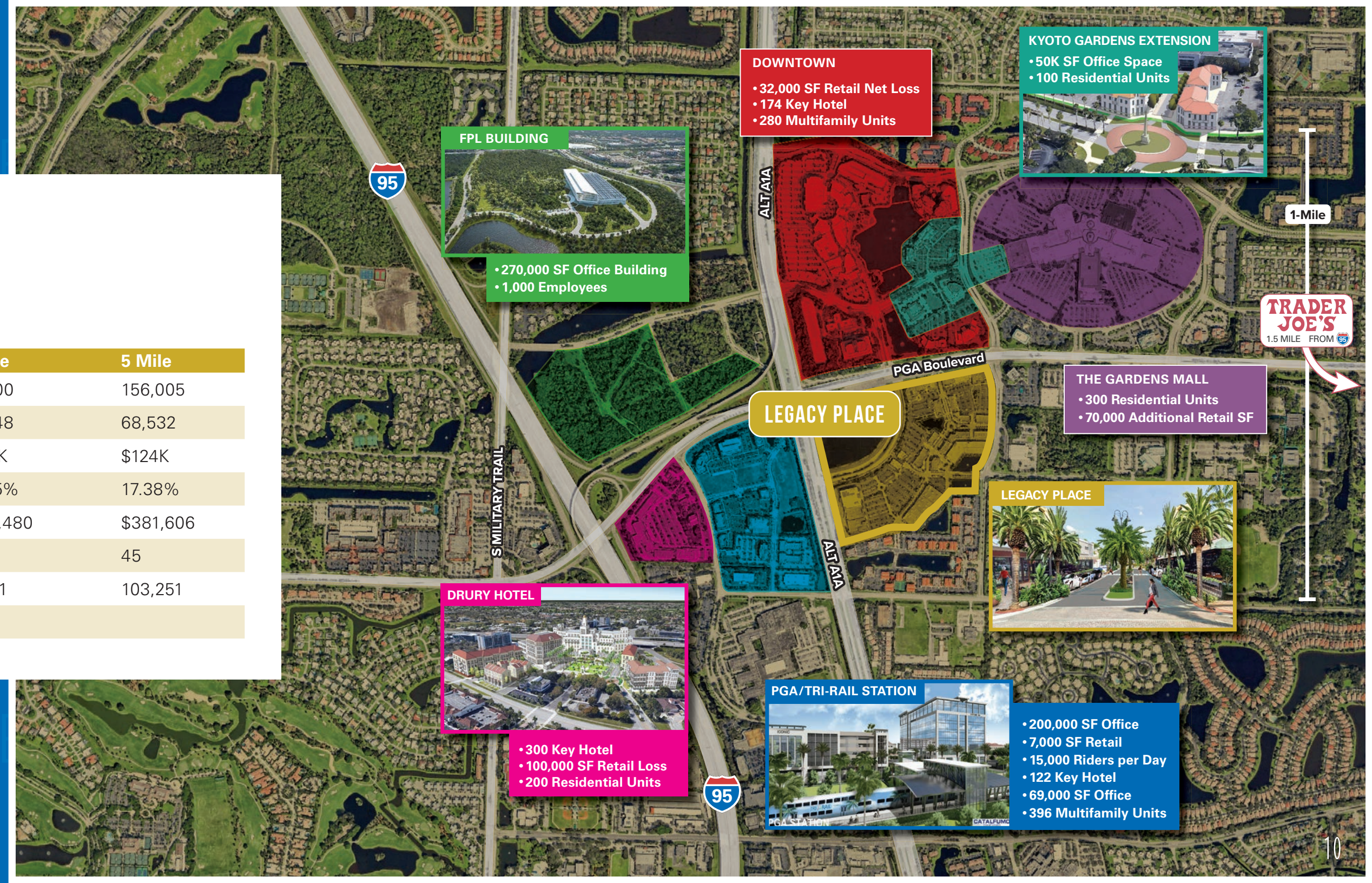
5	William T. Dwyer High School	1,317
12	Palm Beach Gardens High School	2,736
19	Inlet Grove Community High School	788
21	Suncoast Community High School	1,609





# 2022 EST. DEMOGRAPHICS

	1 Mile	3 Mile	5 Mile
Population	9,318	73,000	156,005
Households	4,598	33,248	68,532
Average Household Income	\$95K	\$129K	\$124K
Population Growth 2010 - 2022	14.37%	18.55%	17.38%
2022 Median Home Value	\$333,823	\$391,480	\$381,606
Median Age	46	46	45
Daytime Employment	16,998	59,111	103,251
Traffic Counts	55,600 Cars		





# PALM BEACH COUNTY



Is known for its diversity and energy and as a place to sit back, relax, and enjoy yourself.

**Listed as one the fastest growing cities by Forbes**, Palm Beach Gardens is expected to continue to expand, offering opportunities for businesses big and small to succeed.

*Palm Beach County is booming for business. Business Relocation Palm Beach County. (n.d.). Retrieved August 25, 2022*



LEGACY

PLACE

Managed by

**WOOLBRIGHT DEVELOPMENT, INC.**

**NEWMARK**

**John Ellis**

john.ellis@nmrk.com  
t 305-372-6204

**Warren Dauber**

warren.dauber@nmrk.com  
t 248-345-0484